



DUO +1

Scissors Lift

Parts Breakdown

ET080201-en



Lifting Technology



SINCE 1969



© MAHA Maschinenbau Haldenwang GmbH & Co. KG

Legal notice based on ISO 16016:

The reproduction, distribution and utilization of this document as well as the communication of its contents to others without explicit authorizations is prohibited. Offenders will be held liable for the payment of damages. All rights reserved in the event of the grant of a patent, utility model or design.

The contents of this edition have been checked with great care. However. Errors cannot be fully excluded. Subject to technical change without notice.

Document

Document N^o: ET080201-en
Approval Date: 27.01.2012

Manufacturer

MAHA Maschinenbau Haldenwang GmbH & Co. KG
Hoyen 20
87490 Haldenwang
Germany

Phone: +49 (0) 8374 585 0
Fax: +49 (0) 8374 585 590
Fax Parts: +49 (0) 8374 585 565
Internet: <http://www.maha.de>
E-Mail: maha@maha.de
Hotline: +49 (0) 180 56242 60 for Brake Testers and Test Lanes
+49 (0) 180 56242 80 for Automotive Lifts
+49 (0) 180 56242 90 for Dynamometers and Emission Testers

Service

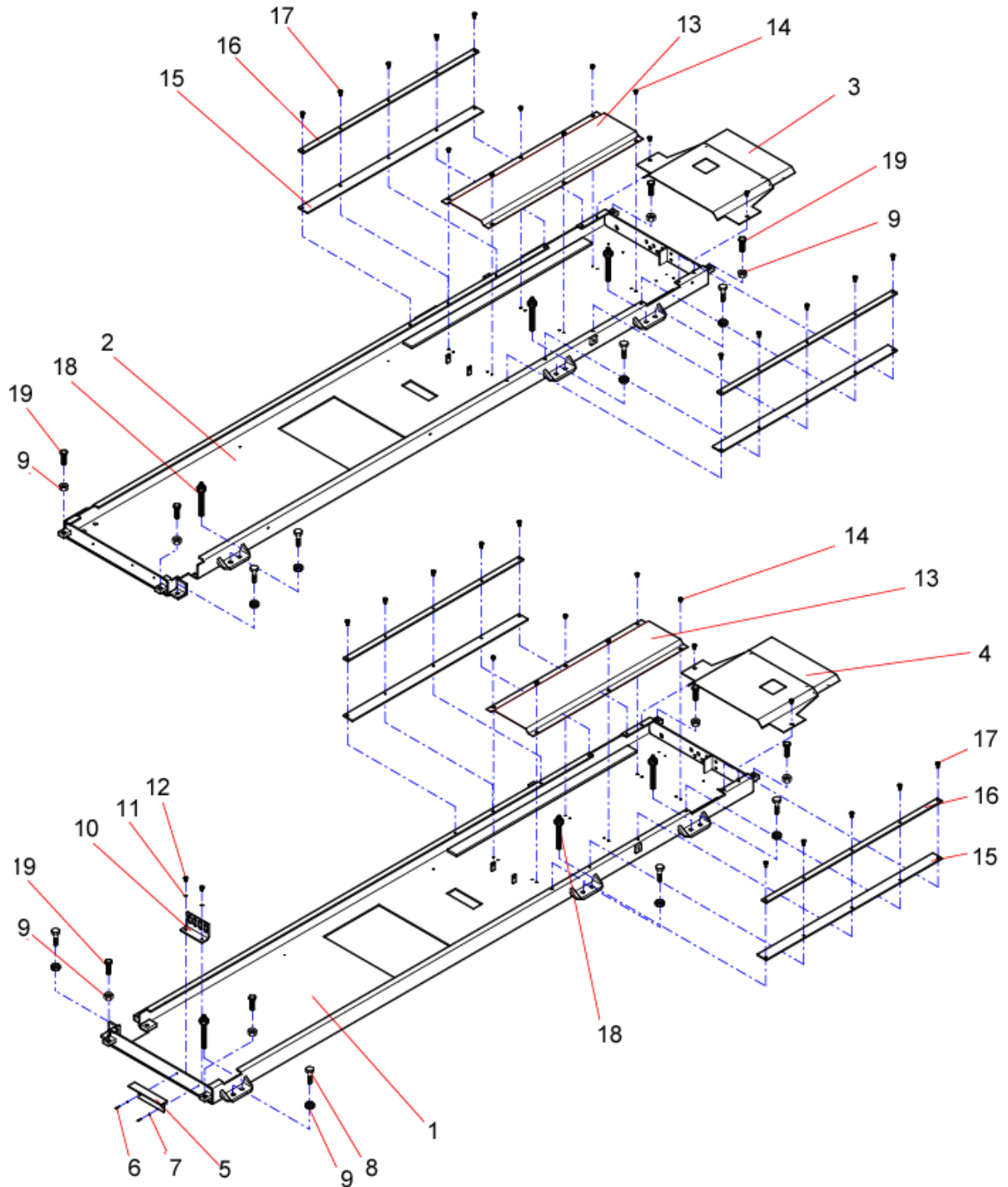
AutomoTec GmbH
Maybachstraße 8
87437 Kempten
Germany
Phone: +49 (0) 180 56242 50
Fax: +49 (0) 180 56242 55
Internet: <http://www.automo-tec.com>
E-Mail: service@automo-tec.com

Contents

DUO +1

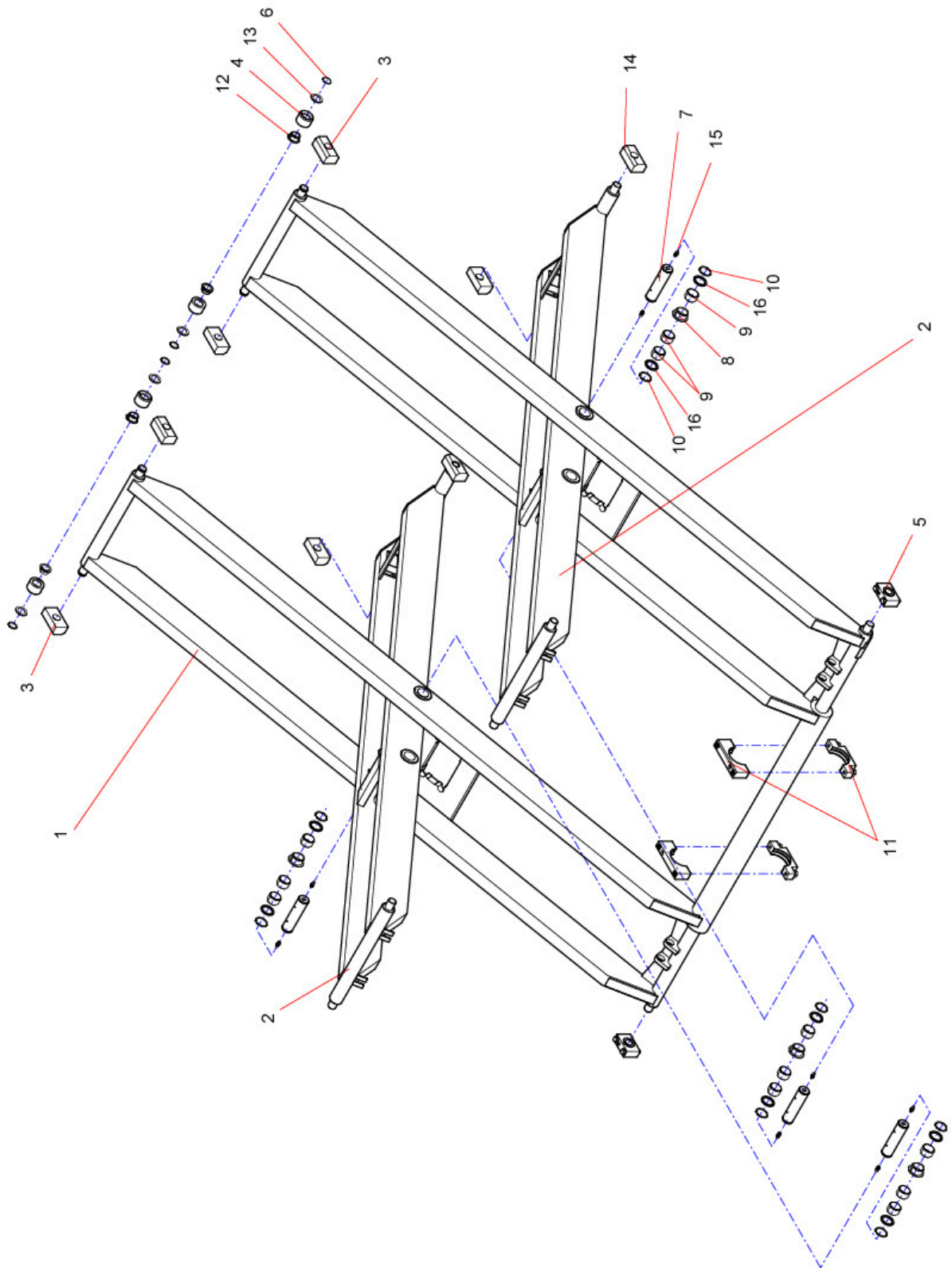
- 1 Base Plate 4
- 2 Scissors 6
- 3 Bearings 8
 - 3.1 Thrust Bearing Block 8
 - 3.2 Thrust Bearing (Inside) 9
- 4 Raising Lever 10
- 5 Hydraulic Cylinder 11
- 6 Lighting 12
- 7 Cross Member 13
- 8 Main Shaft Cover 13
- 9 Terminal Board 14
- 10 Automatic Roll-off Protection 15
- 11 Ramps 16
- 12 Wheel-Free Jack (Installation) 17
- 13 Supports 18

1 Base Plate



| ItemNo. | SparePart | ArticleNumber |
|----------------|---------------------------|----------------------|
| 1 | Floor Tub left | 03 08 02100 |
| 2 | Floor Tub right | 03 08 02105 |
| 3 | Cover left | 03 08 02050 |
| 4 | Cover right | 03 08 02040 |
| 5 | Angle | 02 08 02010 |
| 6 | Allen Screw M4x16 | 22 0084 04016 1 |
| 7 | Washer A4,3 | 22 0125 04 1 |
| 8 | Hex Head Cap Screw M16x60 | 22 0933 16060 1 |
| 9 | Hex Nut M16 | 22 0934 16 1 |
| 10 | Support, Proximity Switch | 02 08 02035 |
| 11 | Washer A8,4 | 22 0125 08 1 |
| 12 | Hex Head Cap Screw M8x12 | 22 0933 08012 1 |
| 13 | Cover Plate | 02 08 02110 |
| 14 | Hex Head Cap Screw M8x8 | 22 0933 08008 K |
| 15 | Cover Rubber | 17 2069 |
| 16 | Holder | 02 08 02075 |
| 17 | Hex Head Cap Screw M8x16 | 22 0933 08016 1 |
| 18 | Heavy-Duty Anchor | 23 5050 |
| 19 | Hex Head Cap Screw M16x50 | 22 0933 16050 1 |

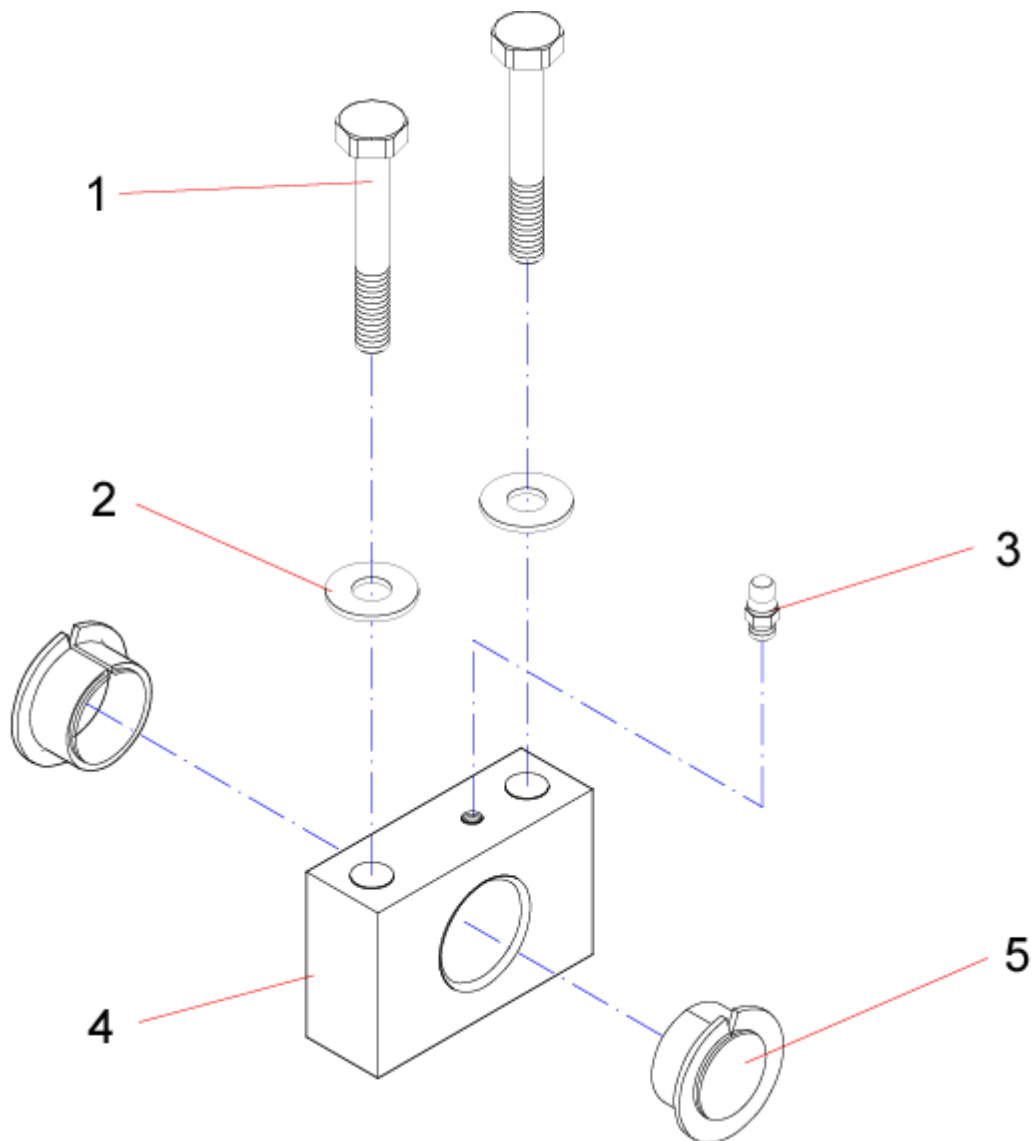
2 Scissors



| ItemNo. | SparePart | ArticleNumber |
|----------------|--------------------------------------|----------------------|
| 1 | Scissors outside | 03 08 18200 |
| 2 | Scissors inside | 03 08 17050 |
| 3 | Slider Block Top | 02 08 17115 |
| 4 | Roller | 02 08 17065 |
| 5 | Thrust Bearing Bracket Assembly | 03 08 02015 |
| 6 | Circlip A30x1,5 | 22 0471 030 |
| 7 | Scissors Shaft with Lubrication Hole | 02 08 10530 |
| 8 | Plain Bearing GLY.PBG 404426 F | 24 1741 1 |
| 9 | Plain Bearing GLY.PBG 404430 A | 24 1742 |
| 10 | Circlip A40x1,75 | 22 0471 040 |
| 11 | Thrust Bearing inside | 03 08 04850 |
| 12 | Plain Bearing GLY.PBG 303426 F | 24 1732 1 |
| 13 | Adjusting Washer 30x42x1 | 22 0988 304210 |
| | Adjusting Washer 30x42x1,5 | 22 0988 304215 |
| | Adjusting Washer 30x42x2 | 22 0988 304220 |
| 14 | Slider Block Bottom | 31 6051 |
| 15 | Zerk Fitting 1/4" -28 UNF-3A | 23 0400 |
| 16 | Adjusting Washer A40x50x2,5 | 22 0988 405025 |

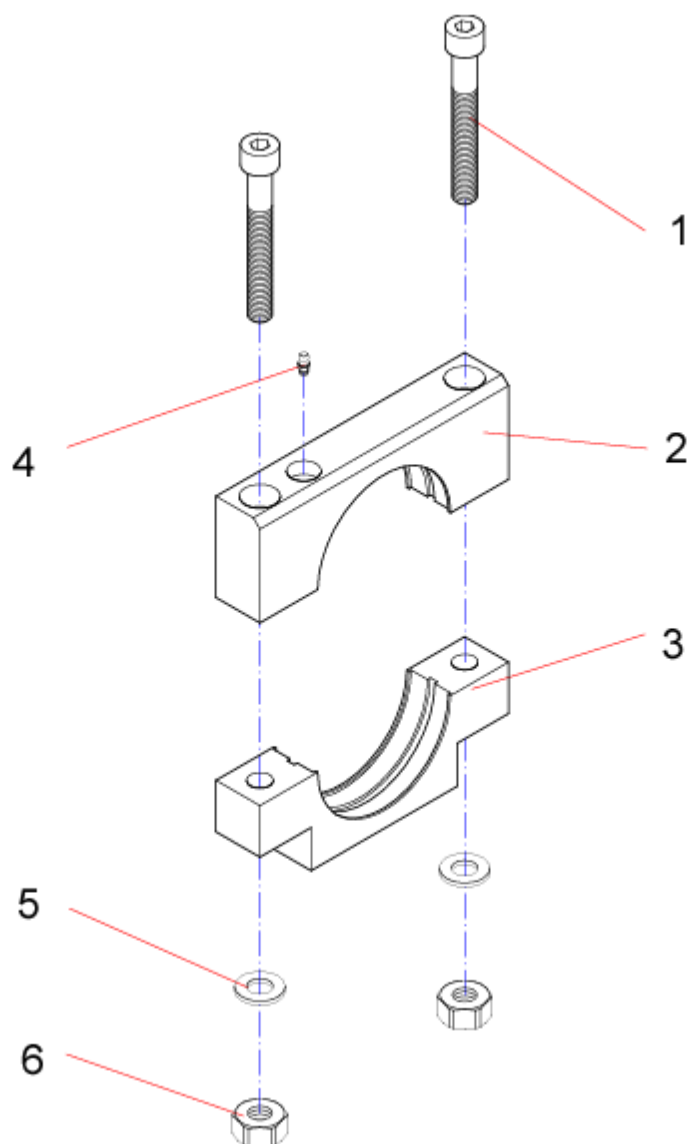
3 Bearings

3.1 Thrust Bearing Block



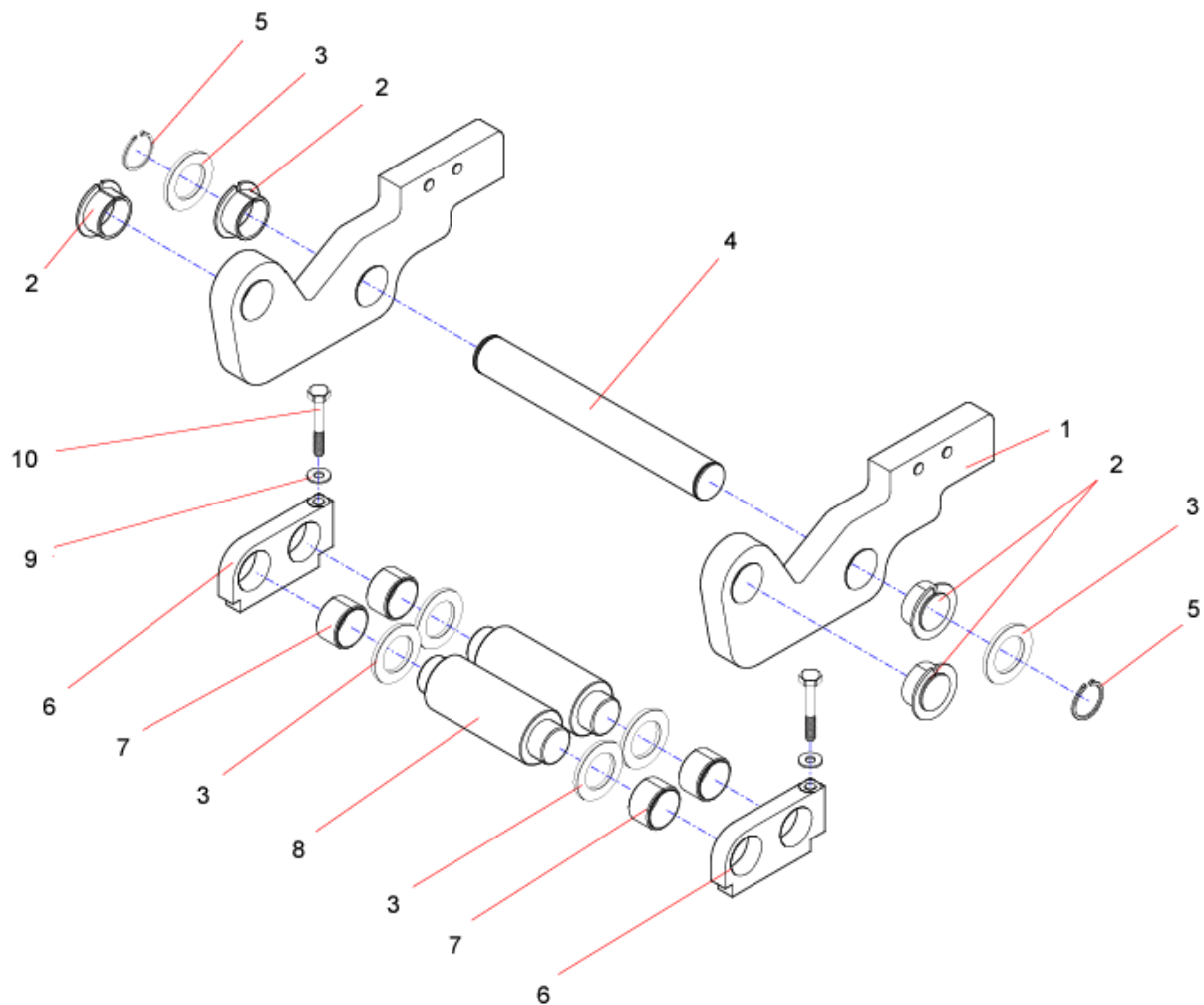
| ItemNo. | SparePart | ArticleNumber |
|---------|--------------------------------|---------------|
| 1 | Hex Head Cap Screw M12x70 | 22 0931 12070 |
| 2 | Washer A13 | 22 0125 12 1 |
| 3 | Zerk Fitting 1/4" - 28 UNF-3A | 23 0400 |
| 4 | Thrust Bearing Bracket | 02 08 02020 |
| 5 | Plain Bearing GLY.PBG 303416 F | 24 1728 1 |

3.2 Thrust Bearing (Inside)



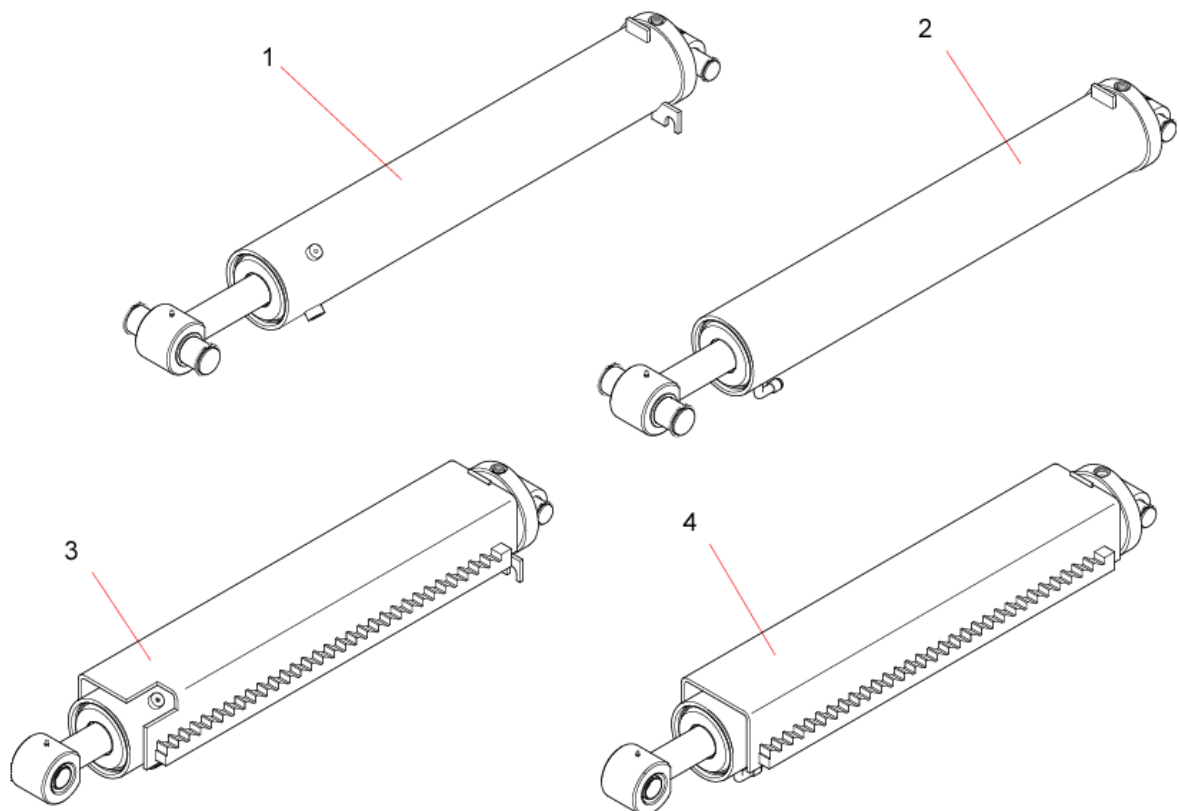
| ItemNo. | SparePart | ArticleNumber |
|---------|-------------------------------|-----------------|
| 1 | Allen Screw M12x90 | 22 0912 12090 1 |
| 2 | Bearing Shell Top | 02 08 04810 |
| 3 | Bearing Shell Bottom | 02 08 04800 |
| 4 | Zerk Fitting 1/4" - 28 UNF-3A | 23 0400 |
| 5 | Washer A13 | 22 0125 12 1 |
| 6 | Hex Nut M12 | 22 0934 12 1 |

4 Raising Lever



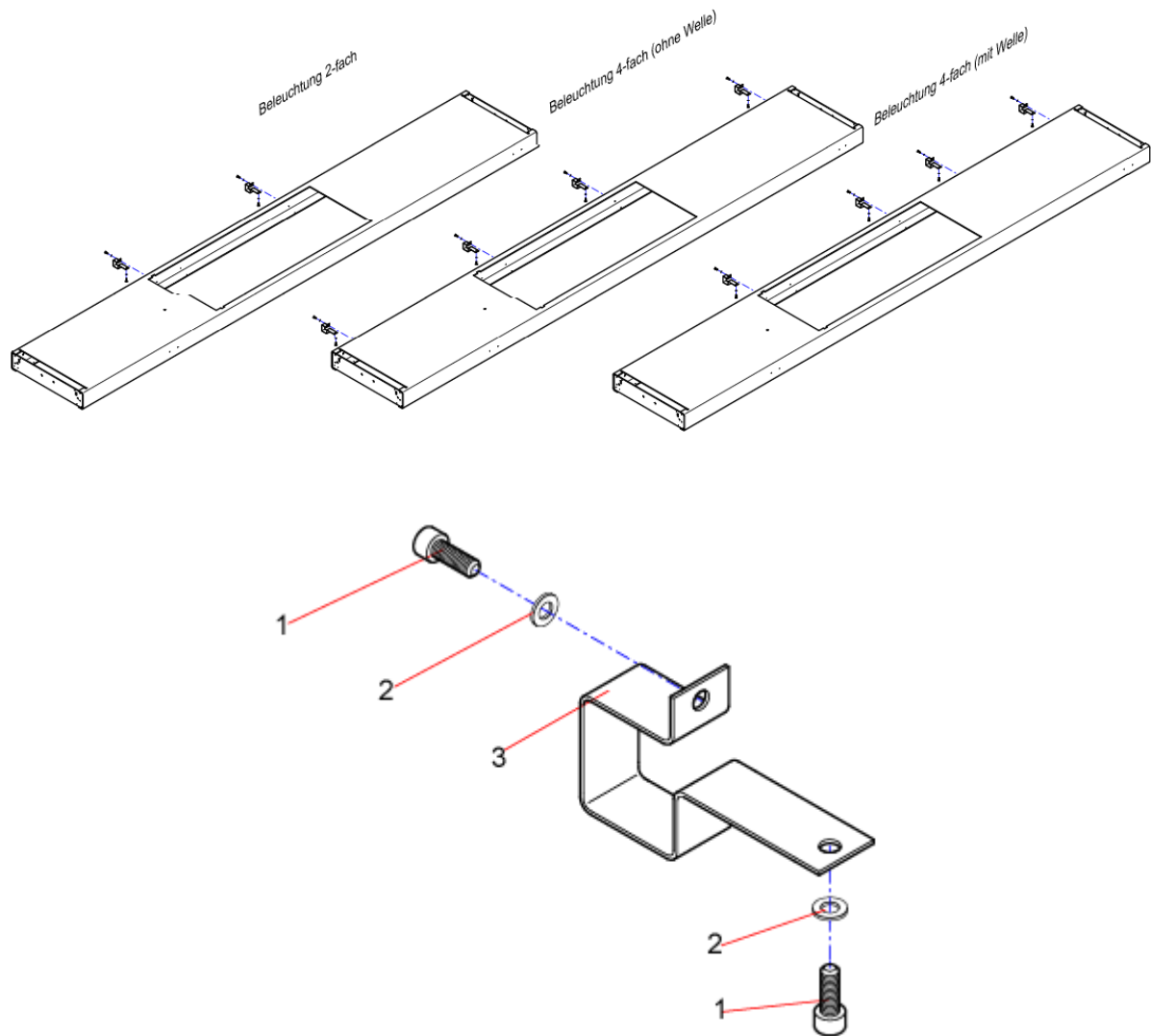
| ItemNo. | SparePart | ArticleNumber |
|---------|--------------------------------|-----------------|
| 1 | Lever | 02 08 56000 |
| 2 | Plain Bearing GLY.PBG 404426 F | 24 1741 1 |
| | Plain Bearing GLY.PG 404430 A | 24 1742 |
| 3 | Adjusting Washer 40x50x0,5 | 22 0988 405005 |
| | Adjusting Washer 40x50x1 | 22 0988 405010 |
| | Adjusting Washer 40x50x2 | 22 0988 405020 |
| 4 | Shaft | 02 08 17110 |
| 5 | Circlip A40x1,75 | 22 0471 040 |
| 6 | Bearing Bracket | 02 08 56120 |
| 7 | Plain Bearing GLY.PG 404420 A | 24 1740 |
| 8 | Roller | 02 08 56125 |
| 9 | Washer A10,5 | 22 012 10 1 |
| 10 | Hex Head Cap Screw M10x70 | 22 0933 10070 1 |

5 Hydraulic Cylinder



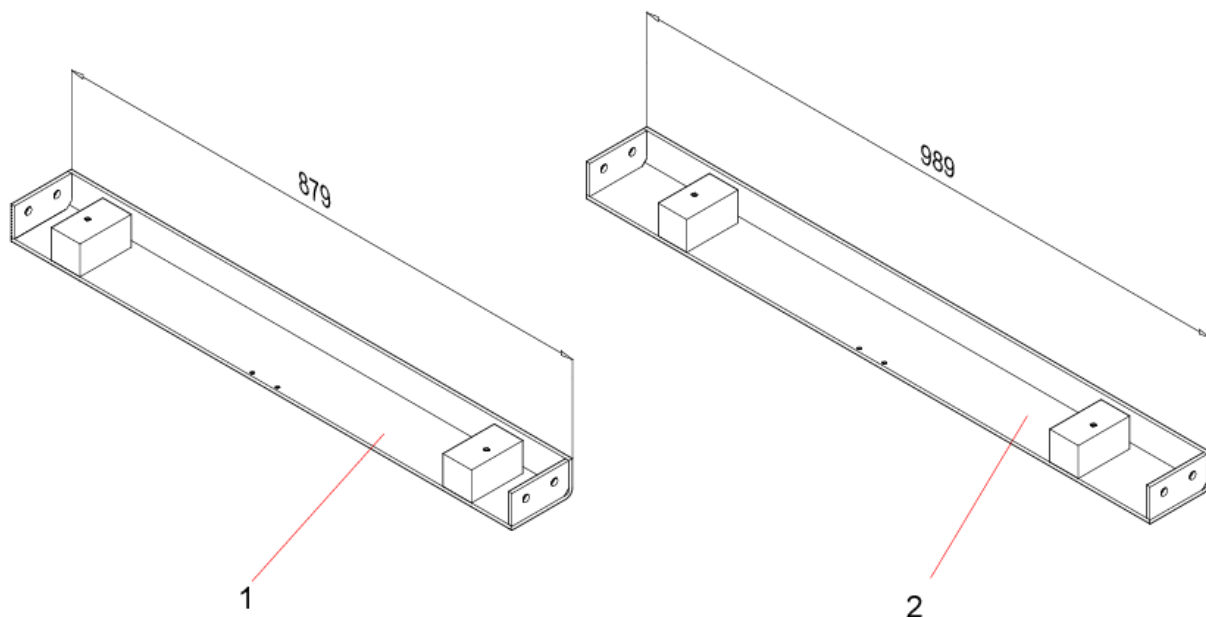
| ItemNo. | SparePart | ArticleNumber |
|---------|-------------------------|---------------|
| 1 | Master Cylinder | 03 08 57002 |
| 2 | Slave Cylinder | 03 08 57008 |
| 3 | Master Cylinder, Lock | 03 08 57003 |
| 4 | Slave Cylinder, Lock GN | 03 08 57007 |
| | Slave Cylinder, Lock +1 | 03 08 57009 |

6 Lighting



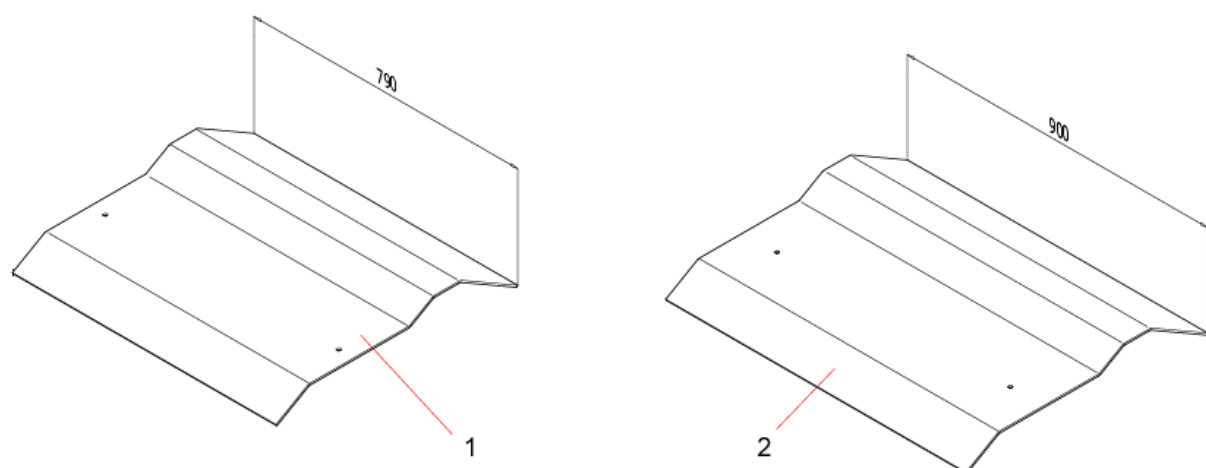
| ItemNo. | SparePart | ArticleNumber |
|---------|-------------------|-----------------|
| 1 | Allen Screw M6x16 | 22 0912 06016 1 |
| 2 | Washer A6,4 | 22 0125 06 1 |
| 3 | Securing clip | 02 08 23045 |
| | Pit light 18W | 51 0319 |
| | Pit light 36W | 51 0320 |

7 Cross Member



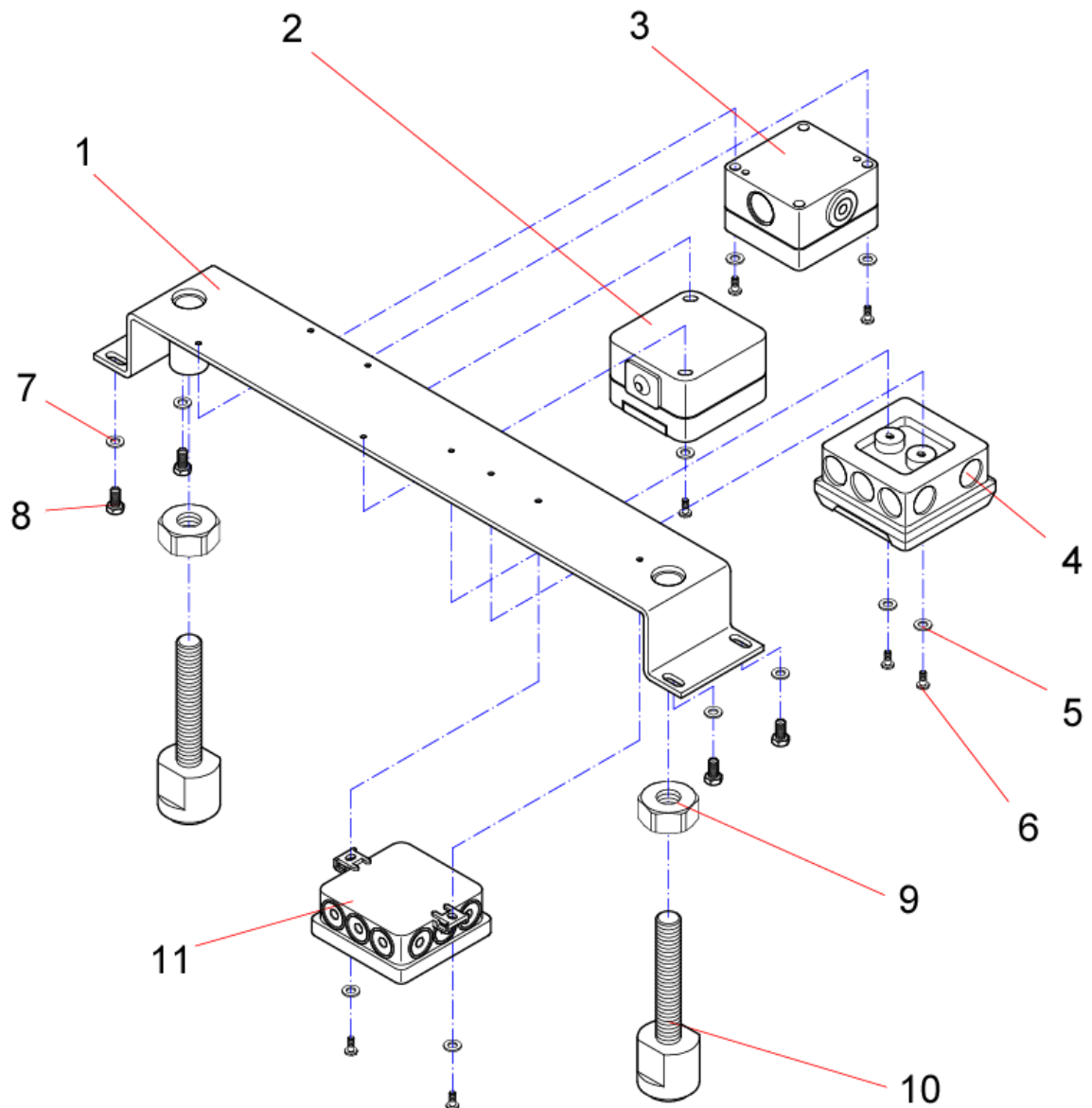
| ItemNo. | SparePart | ArticleNumber |
|---------|---------------------|---------------|
| 1 | Cross Connection | 03 08 18100 |
| 2 | Cross Connection DC | 03 08 18105 |

8 Main Shaft Cover



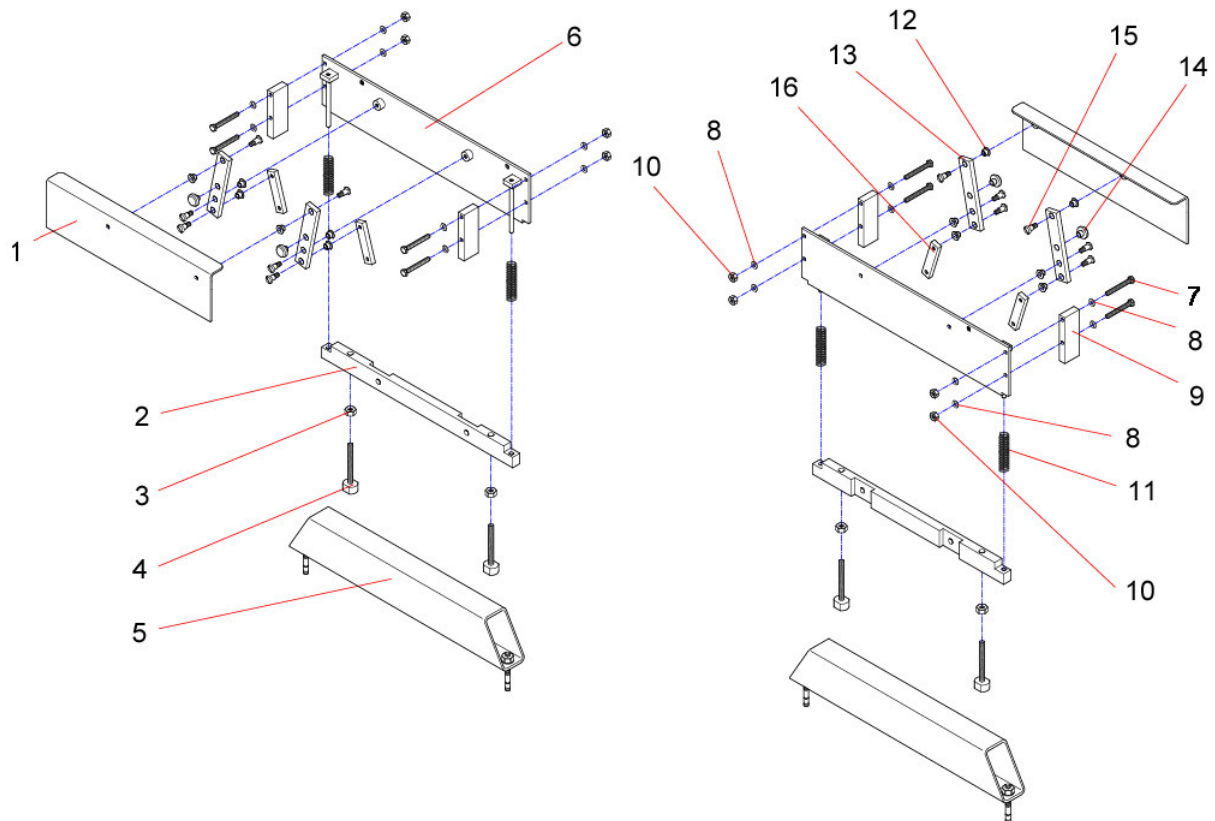
| ItemNo. | SparePart | ArticleNumber |
|---------|---------------------|---------------|
| 1 | Main Shaft Cover | 03 08 05100 |
| 2 | Main Shaft Cover DC | 03 08 05120 |

9 Terminal Board



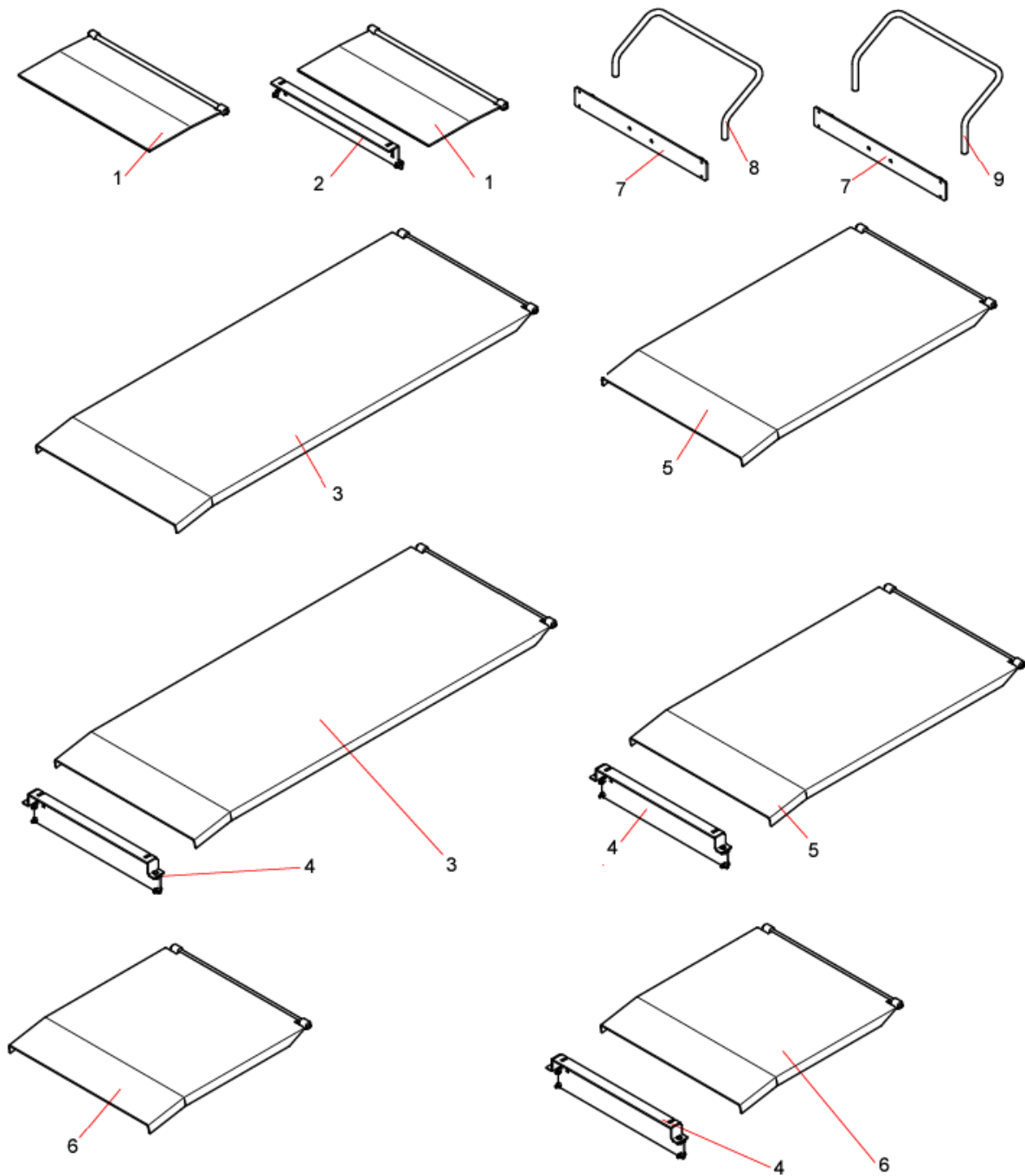
| ItemNo. | SparePart | ArticleNumber |
|---------|----------------------------|-----------------|
| 1 | Holder | 02 08 79363 E |
| | Terminal Board | 03 08 79362 |
| 2 | Socket | 53 0108 |
| 3 | Infrared Eye with Receiver | 52 2018 |
| 4 | Branch Box | 53 2470 |
| 5 | Washer A4,3 | 22 0125 04 1 |
| 6 | Allen Screw M4x10 | 22 0084 04010 1 |
| 7 | Washer A6,4 | 22 0125 06 1 |
| 8 | Hex Head Cap Screw M6x12 | 22 0933 06012 1 |
| 9 | Hex Nut M16 | 22 0934 16 1 |
| 10 | Dowel Pin M16x94 | 31 6210 |
| 11 | Branch Box Plastic | 53 2035 |

10 Automatic Roll-off Protection



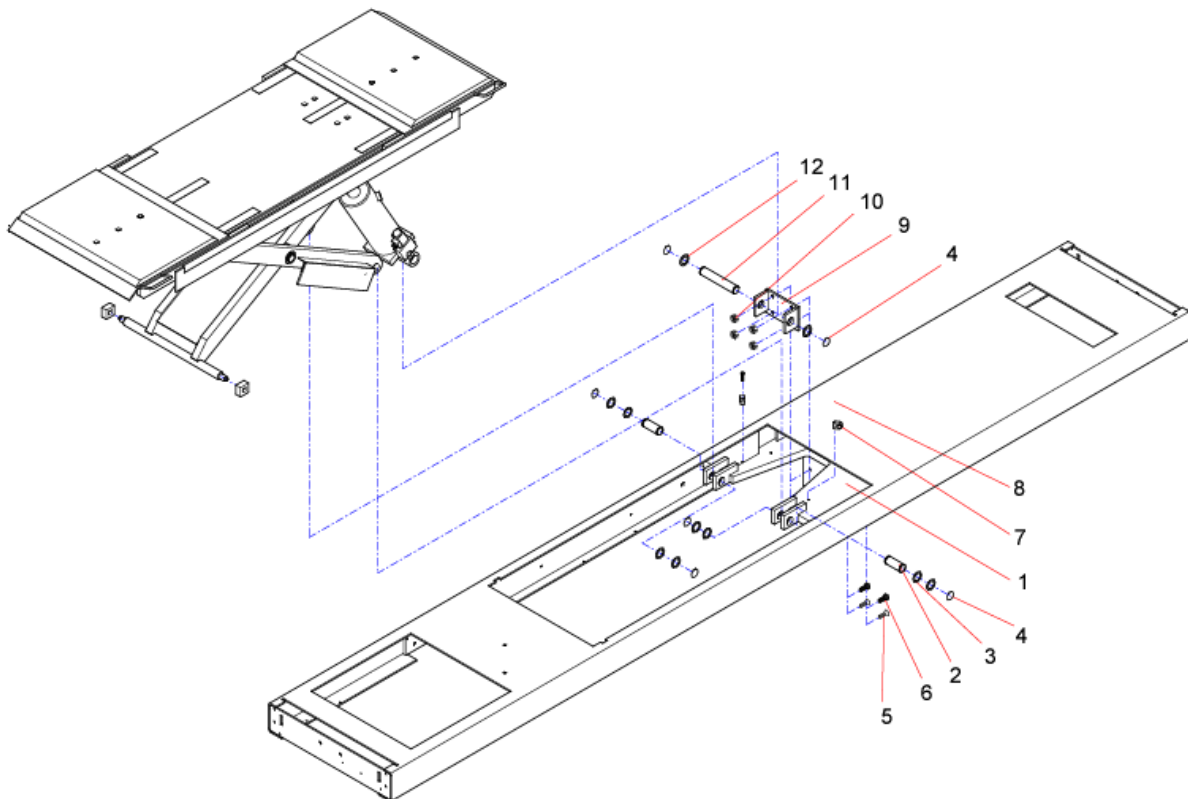
| ItemNo. | SparePart | ArticleNumber |
|---------|---|-----------------|
| 1 | Roll-off Protection without Compensating Plates | 03 08 87800 |
| | Roll-off Protection with Compensating Plates | 03 08 87850 |
| 2 | Guide | 02 08 87530 |
| 3 | Hex Nut M10 | 22 0934 10 1 |
| 4 | Dowel Pin | 31 6204 1 |
| 5 | Support, Lift Height 285mm | 03 08 87560 |
| | Support, Lift Height 225mm | 03 08 87855 |
| 6 | Base Support | 03 08 87600 |
| | Base Support Compensating Plate | 03 08 87700 |
| 7 | Hex Head Cap Screw M8x65 | 22 0933 08065 1 |
| 8 | Washer A8,4 | 22 0125 08 1 |
| 9 | Distance | 02 08 87000 |
| 10 | Hex Nut M8 | 22 0934 08 1 |
| 11 | Pressure Spring 2,5x20x120 | 23 9225 020 120 |
| 12 | Plain Bearing GLY.PBG 101209 | 24 1710 2 |
| 13 | Reversing Lever 155lg. | 02 08 87510 |
| 14 | Slider Block | 02 08 87540 |
| 15 | Oval Head Screw M8x12/10 | 22 0923 08012 |
| 16 | Reversing Lever 90lg. | 02 08 87520 |

11 Ramps



| ItemNo. | SparePart | ArticleNumber |
|---------|------------------------------------|---------------|
| 1 | Approach Flap | 03 08 24227 |
| 2 | Holder, Approach Flap | 03 08 20020 |
| 3 | Approach Flap Long | 03 08 24009 |
| 4 | Ramp Holder, Superstructure | 03 08 20030 |
| 5 | Approach Ramp 1100mm | 03 08 24048 |
| 6 | Approach Ramp Short | 03 08 24050 |
| 7 | Adapter Plate, Roll-off Protection | 03 08 20420 E |
| 8 | Roll-off Protection Short | 02 08 21935 |
| 9 | Roll-off Protection Long | 02 08 21940 |

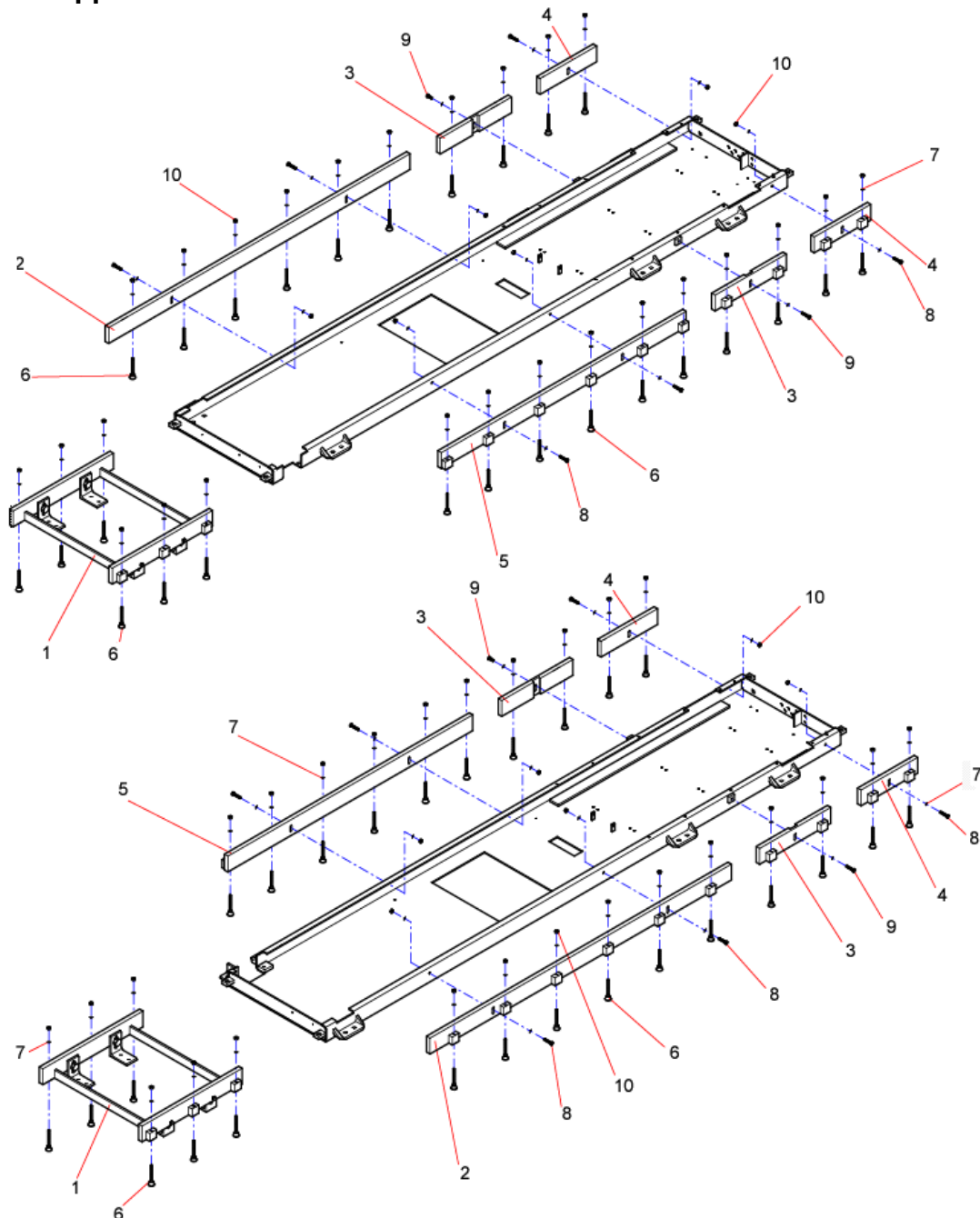
12 Wheel-Free Jack (Installation)



| ItemNo. | SparePart | ArticleNumber |
|---------|----------------------------------|-----------------|
| 1 | Wheel-Free Jack Support | 03 08 23510 |
| 2 | Shaft | 02 08 31070 |
| 3 | Adjusting Washer 30x42x1 | 22 0988 304210 |
| 4 | Circlip A30x1,5 | 22 0471 030 |
| 5 | Countersunk Screw M12x30 | 22 7991 12030 1 |
| 6 | Hex Head Cap Screw M12x30 | 22 0933 12030 1 |
| 7 | Stauff Clamp | 27 3650 |
| 8 | Hex Head Cap Screw M6x30 | 22 0933 06030 1 |
| 9 | Wheel-Free Jack Cylinder Support | 03 08 23505 |
| 10 | Hex Nut M12 | 22 0934 12 1 |
| 11 | Shaft | 02 08 32105 |
| 12 | Adjusting Washer 30x42x2 | 22 0988 304220 |

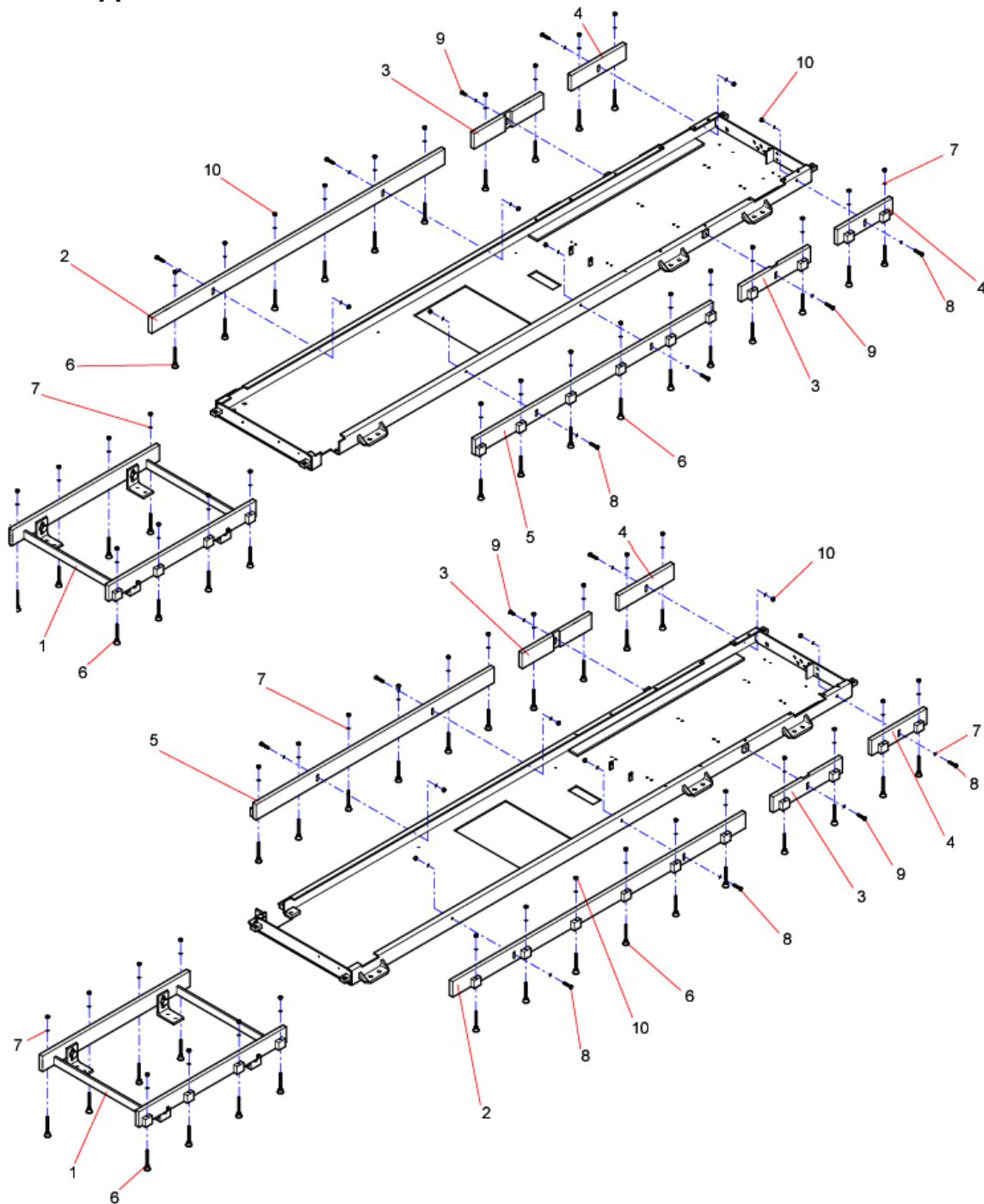
13 Supports

13.1 Supports 4.0m without PMS



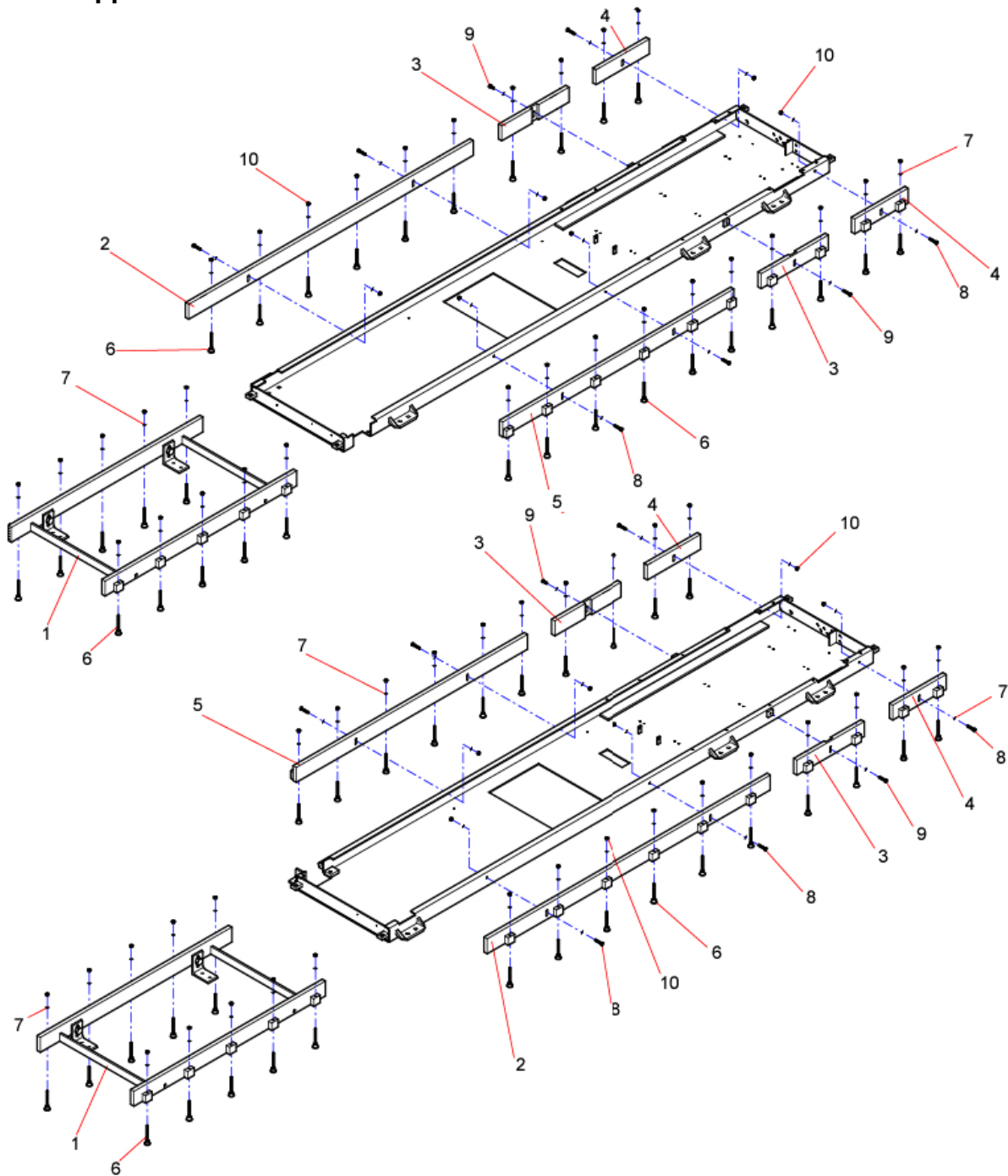
| ItemNo. | SparePart | ArticleNumber |
|---------|--------------------------|-----------------|
| 1 | Support 585mm Assembly | 03 08 02250 |
| 2 | Support 1760mm | 03 08 02215 |
| 3 | Support 416mm | 03 08 02220 |
| 4 | Support 330mm | 03 08 02235 |
| 5 | Support 1430mm | 03 08 02260 |
| 6 | Hinged Foot M8x80 | 23 1430 422 |
| 7 | Washer A8,4 | 22 0125 08 1 |
| 8 | Hex Head Cap Screw M8x40 | 22 0931 08040 1 |
| 9 | Hex Head Cap Screw M8x20 | 22 0933 08020 1 |
| 10 | Hex Nut M8 | 22 0934 08 1 |

13.2 Supports 4.4m without PMS



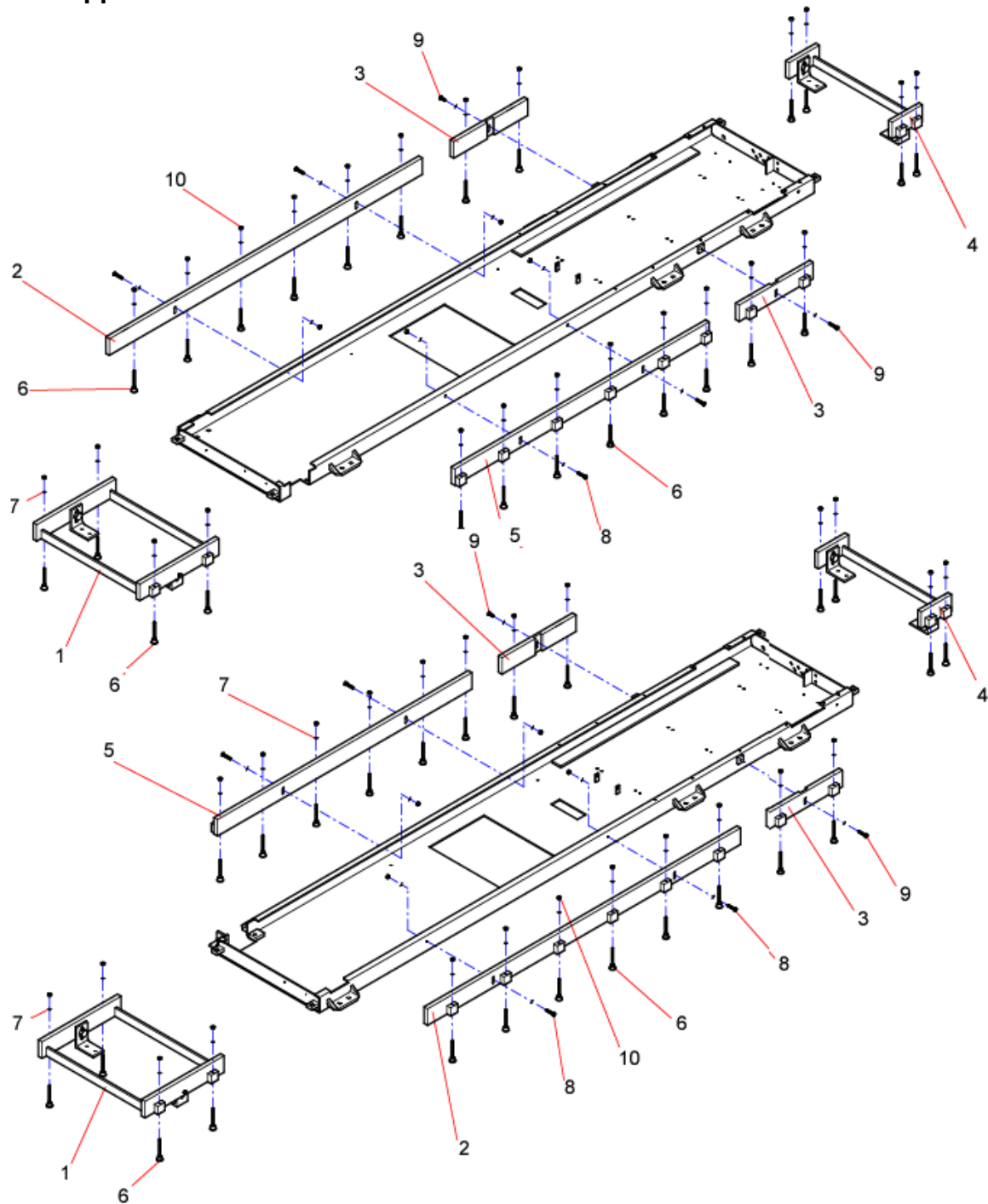
| ItemNo. | SparePart | ArticleNumber |
|---------|--------------------------|-----------------|
| 1 | Support 585mm Assembly | 03 08 02280 |
| 2 | Support 1760mm | 03 08 02215 |
| 3 | Support 416mm | 03 08 02220 |
| 4 | Support 330mm | 03 08 02235 |
| 5 | Support 1430mm | 03 08 02260 |
| 6 | Hinged Foot M8x80 | 23 1430 422 |
| 7 | Washer A8,4 | 22 0125 08 1 |
| 8 | Hex Head Cap Screw M8x40 | 22 0931 08040 1 |
| 9 | Hex Head Cap Screw M8x20 | 22 0933 08020 1 |
| 10 | Hex Nut M8 | 22 0934 08 1 |

13.3 Supports 4.8m without PMS



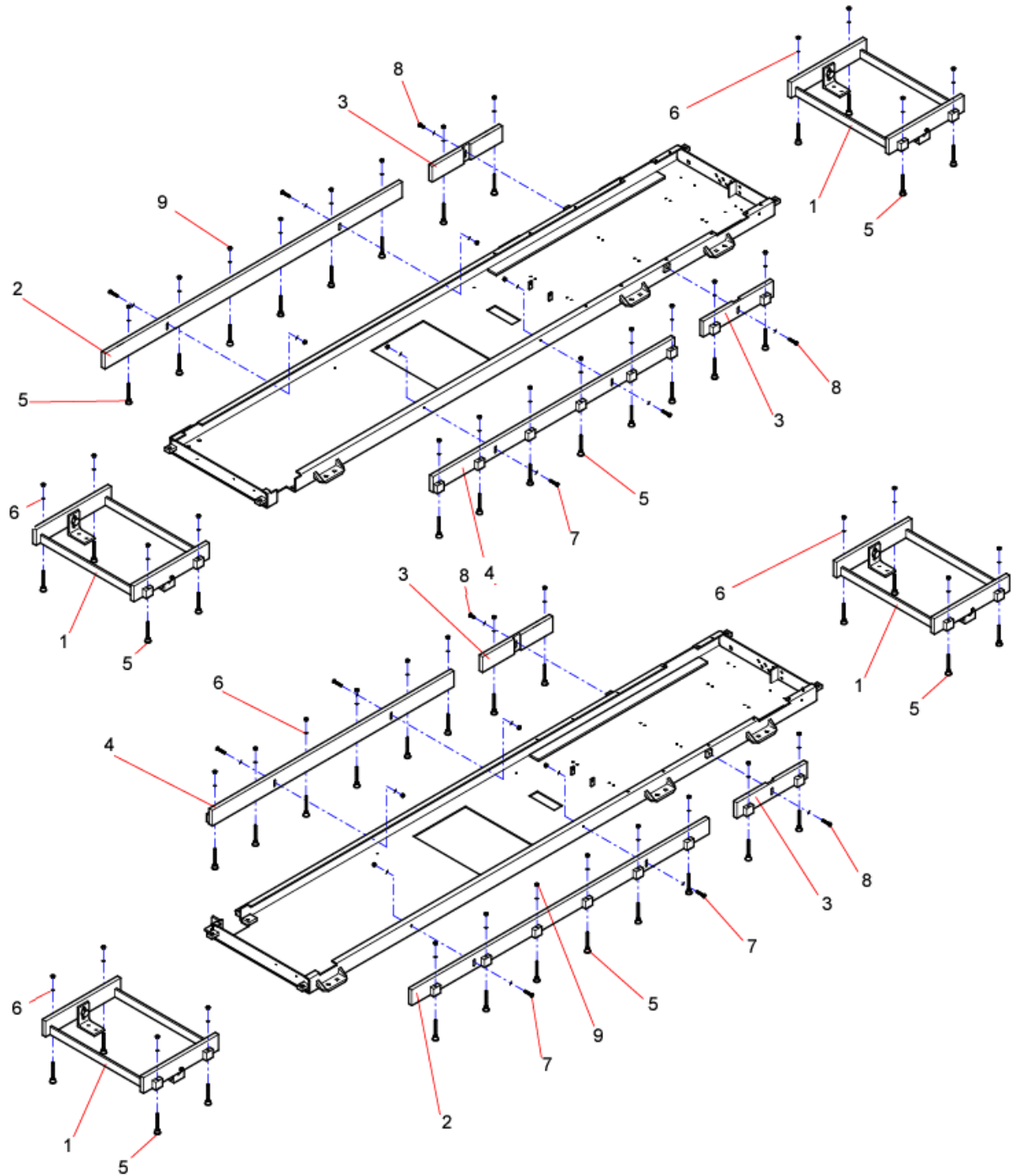
| ItemNo. | SparePart | ArticleNumber |
|---------|--------------------------|-----------------|
| 1 | Support 1185mm Assembly | 03 08 02300 |
| 2 | Support 1760mm | 03 08 02215 |
| 3 | Support 416mm | 03 08 02220 |
| 4 | Support 330mm | 03 08 02235 |
| 5 | Support 1430mm | 03 08 02260 |
| 6 | Hinged Foot M8x80 | 23 1430 422 |
| 7 | Washer A8,4 | 22 0125 08 1 |
| 8 | Hex Head Cap Screw M8x40 | 22 0931 08040 1 |
| 9 | Hex Head Cap Screw M8x20 | 22 0933 08020 1 |
| 10 | Hex Nut M8 | 22 934 08 1 |

13.4 Supports 4.0m with PMS



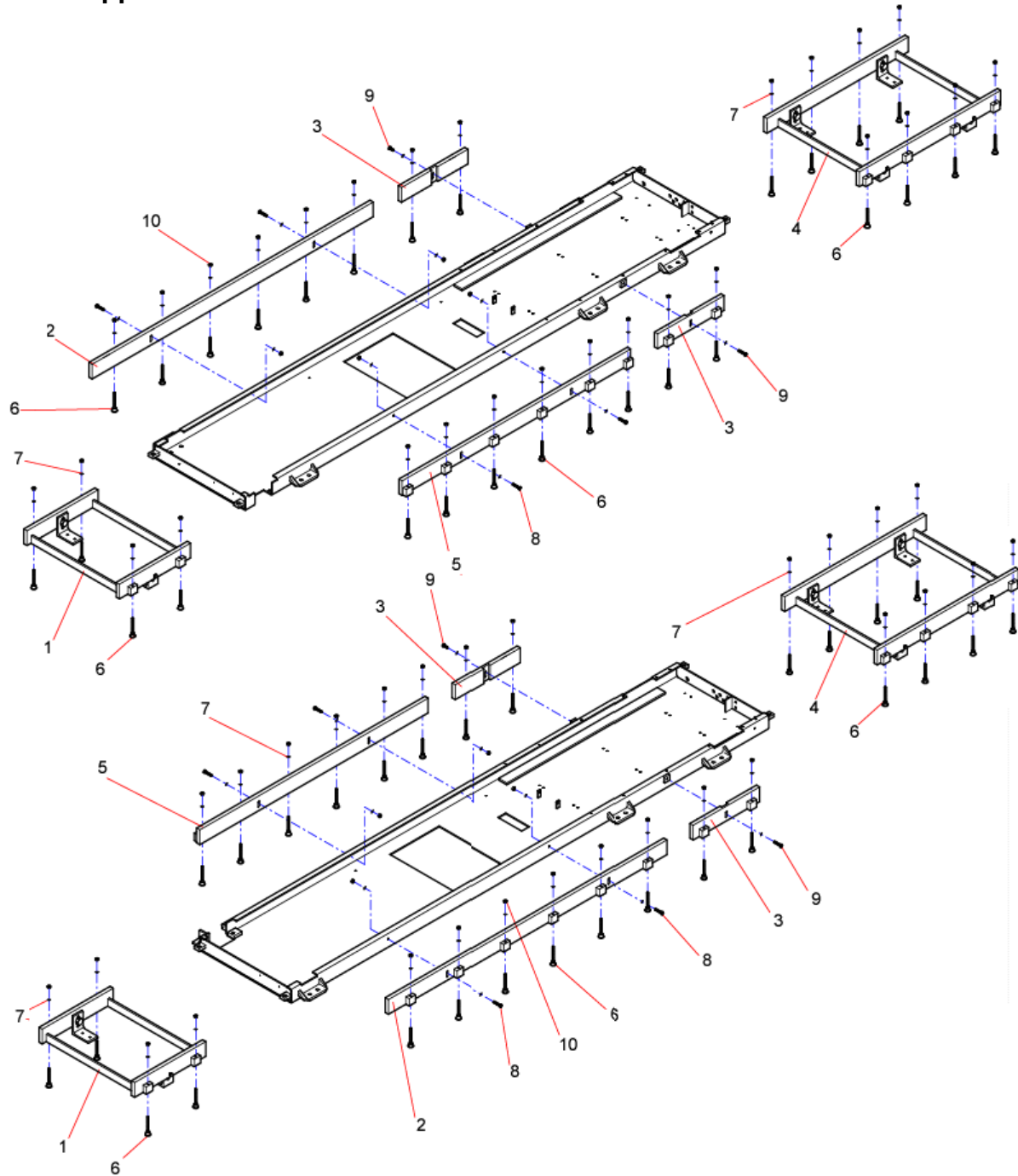
| ItemNo. | SparePart | ArticleNumber |
|---------|--------------------------|-----------------|
| 1 | Support 445mm Assembly | 03 08 02330 |
| 2 | Support 1760mm | 03 08 02215 |
| 3 | Support 416mm | 03 08 02220 |
| 4 | Support 170mm Assembly | 03 08 02370 |
| 5 | Support 1430mm | 03 08 02260 |
| 6 | Hinged Foot M8x80 | 23 1430 422 |
| 7 | Washer A8,4 | 22 0125 08 1 |
| 8 | Hex Head Cap Screw M8x40 | 22 0931 08040 1 |
| 9 | Hex Head Cap Screw M8x20 | 22 0933 08020 1 |
| 10 | Hex Nut M8 | 22 934 08 1 |

13.5 Supports 4.4m with PMS



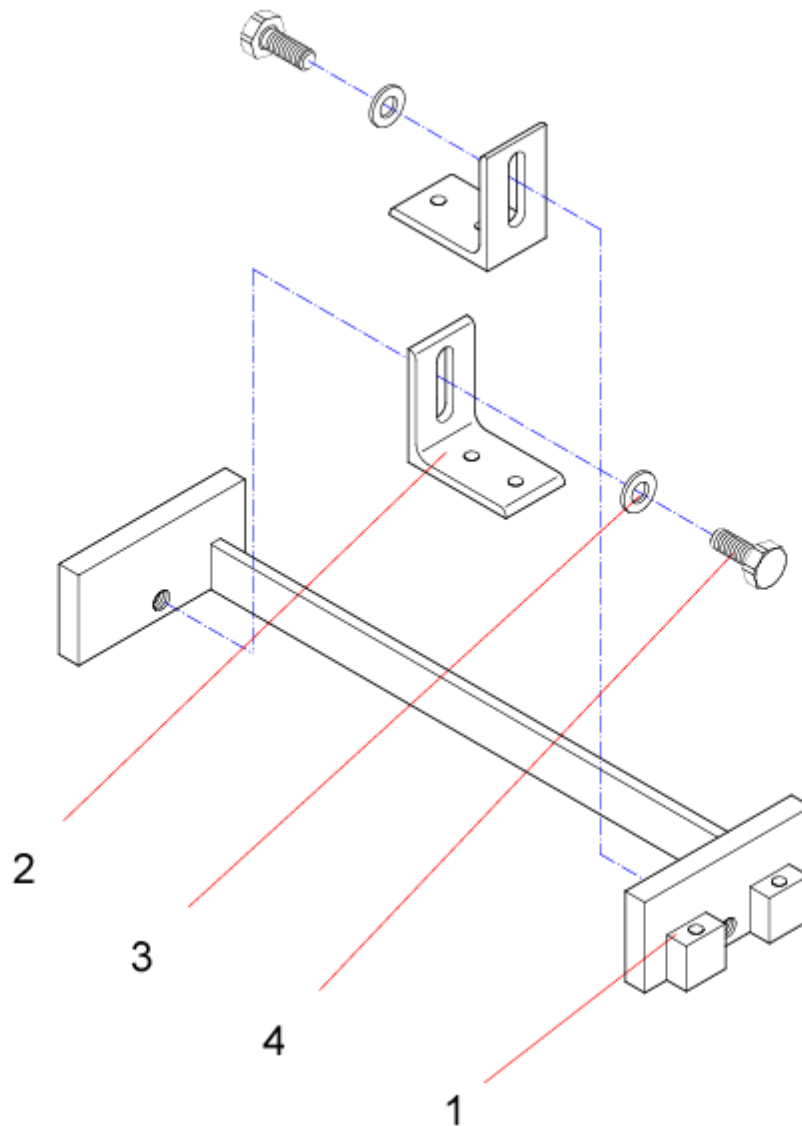
| ItemNo. | SparePart | ArticleNumber |
|---------|--------------------------|-----------------|
| 1 | Support 445mm Assembly | 03 08 02330 |
| 2 | Support 1760mm | 03 08 02215 |
| 3 | Support 416mm | 03 08 02220 |
| 4 | Support 1430mm | 03 08 02260 |
| 5 | Hinged Foot M8x80 | 23 1430 422 |
| 6 | Washer A8,4 | 22 0125 08 1 |
| 7 | Hex Head Cap Screw M8x40 | 22 0931 08040 1 |
| 8 | Hex Head Cap Screw M8x20 | 22 0933 08020 1 |
| 9 | Hex Nut M8 | 22 0934 08 1 |

13.6 Supports 4.8m with PMS



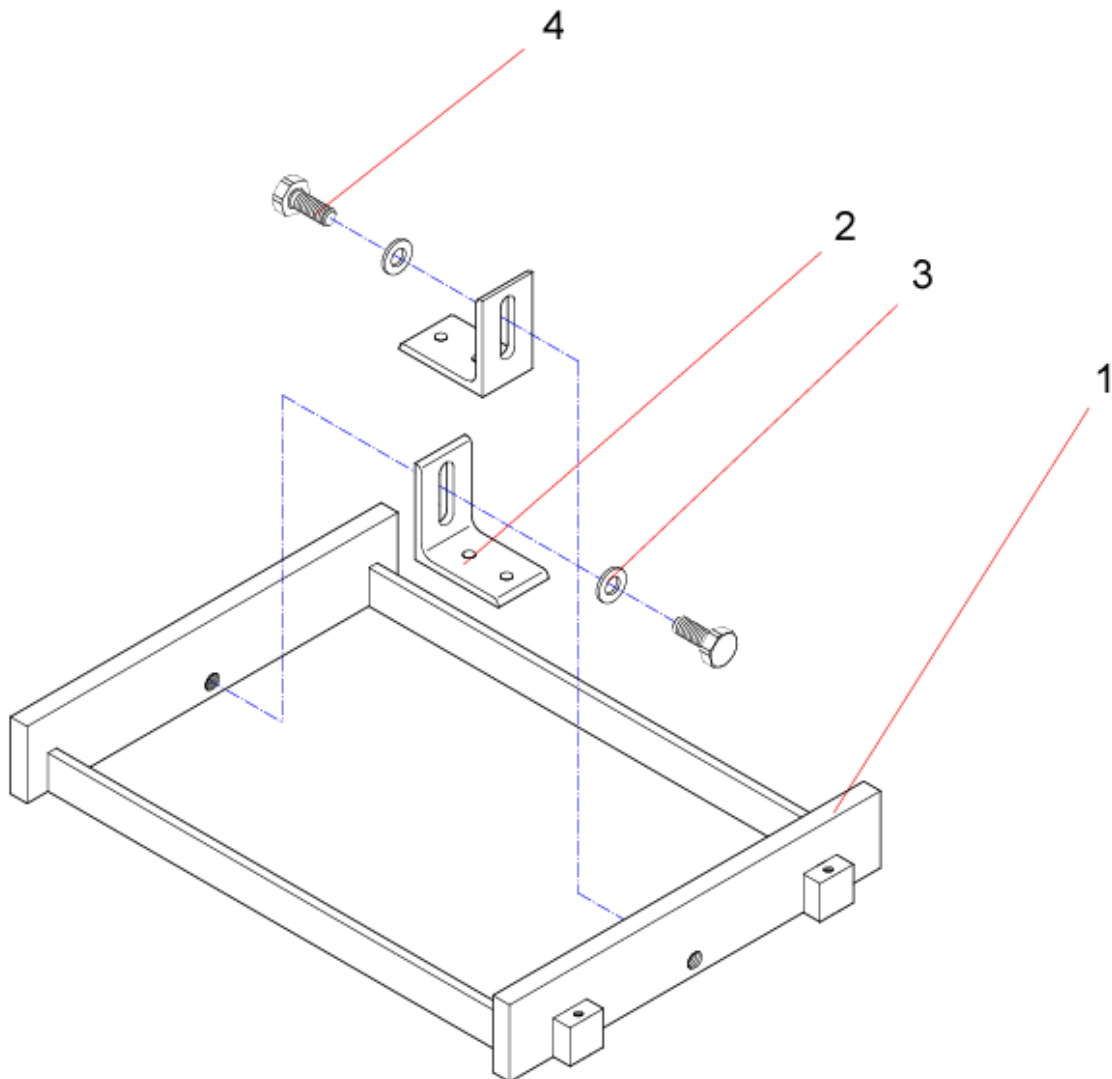
| ItemNo. | SparePart | ArticleNumber |
|---------|--------------------------|-----------------|
| 1 | Support 445mm Assembly | 03 08 02330 |
| 2 | Support 1760mm | 03 08 02215 |
| 3 | Support 416mm | 02 08 02223 |
| 4 | Support 885mm Assembly | 03 08 02280 |
| 5 | Support 1430mm | 03 08 02200 |
| 6 | Hinged Foot M8x80 | 23 1430 422 |
| 7 | Washer A8,4 | 22 0125 08 1 |
| 8 | Hex Head Cap Screw M8x40 | 22 0931 08040 1 |
| 9 | Hex Head Cap Screw M8x20 | 22 0933 08020 1 |
| 10 | Hex Nut M8 | 22 0934 08 1 |

13.7 Supports 170mm Complete



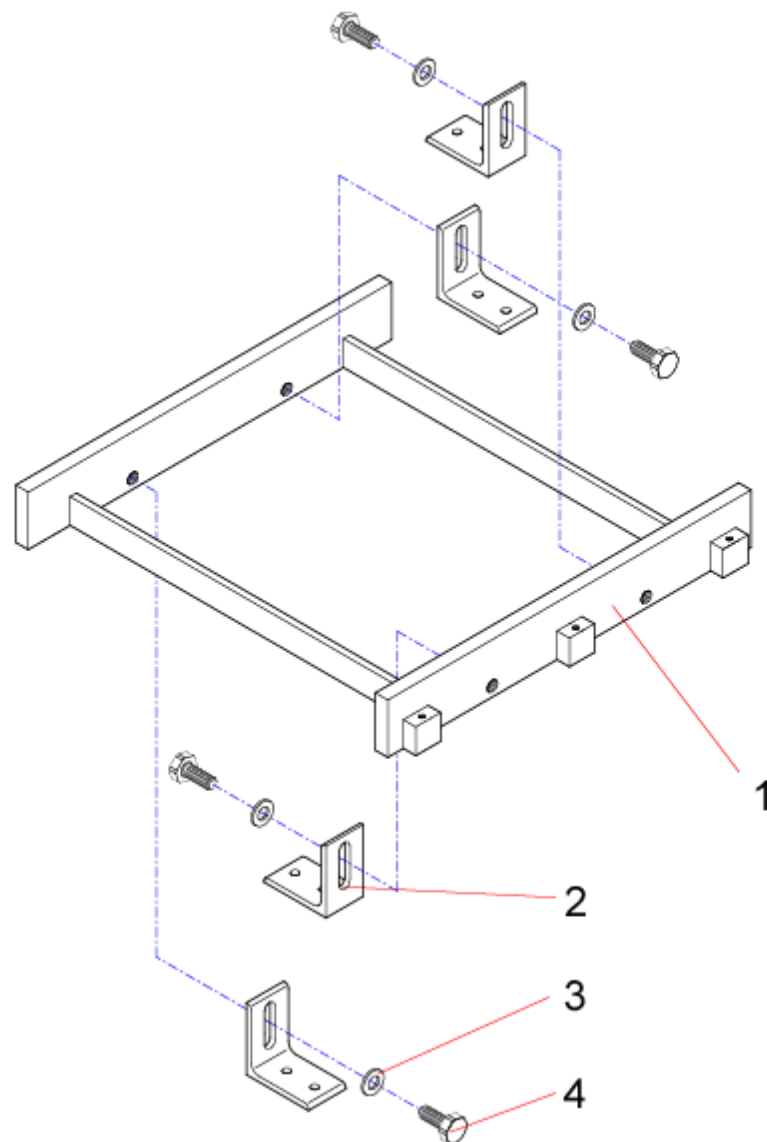
| ItemNo. | SparePart | ArticleNumber |
|---------|------------------------------------|-----------------|
| 1 | Support | 03 08 02370 |
| 2 | Stop Angle, Foundation Depth 230mm | 02 08 02350 |
| | Stop Angle, Foundation Depth 280mm | 02 08 02355 |
| 3 | Washer A17 | 22 0125 16 1 |
| 4 | Hex Head Cap Screw M16x40 | 22 0933 16040 1 |

13.8 Supports 445mm Complete



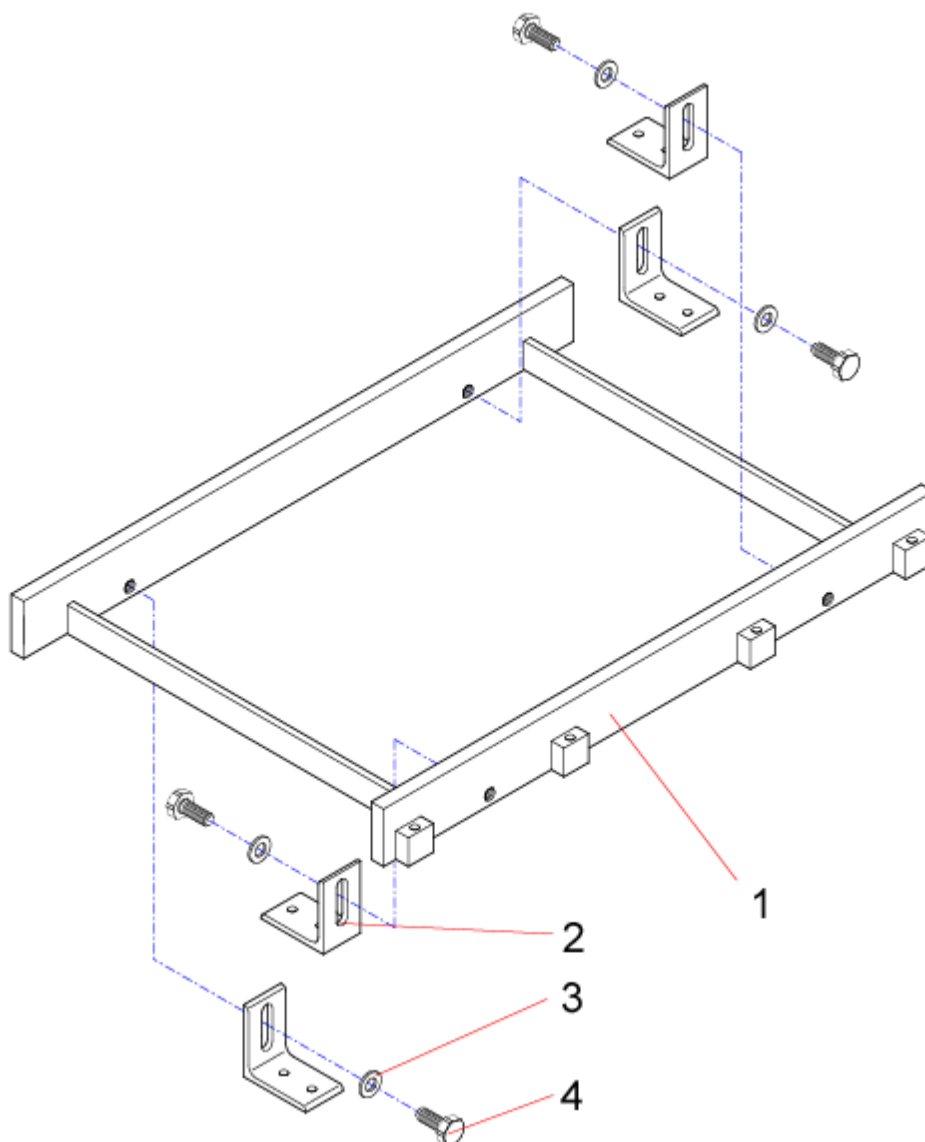
| ItemNo. | SparePart | ArticleNumber |
|---------|------------------------------------|-----------------|
| 1 | Support | 03 08 02320 |
| 2 | Stop Angle, Foundation Depth 230mm | 02 08 02350 |
| | Stop Angle, Foundation Depth 280mm | 02 08 02355 |
| 3 | Washer A17 | 22 0125 16 1 |
| 4 | Hex Head Cap Screw M16x40 | 22 0933 16040 1 |

13.9 Supports 585mm Complete



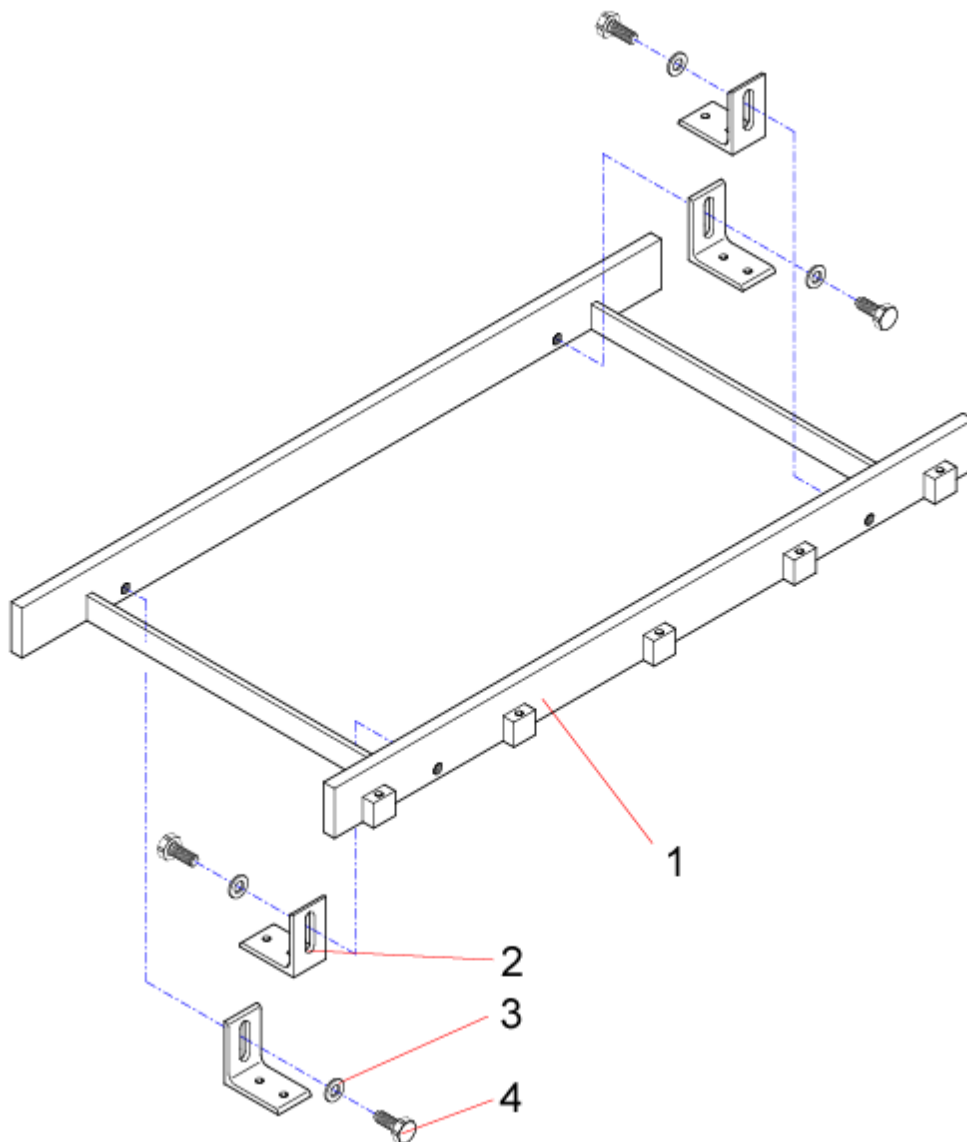
| ItemNo. | SparePart | ArticleNumber |
|---------|------------------------------------|-----------------|
| 1 | Support | 03 08 02250 |
| 2 | Stop Angle, Foundation Depth 230mm | 02 08 02350 |
| | Stop Angle, Foundation Depth 280mm | 02 08 02355 |
| 3 | Washer A17 | 22 0125 16 1 |
| 4 | Hex Head Cap Screw M16x40 | 22 0933 16040 1 |

13.10 Supports 885mm Complete



| ItemNo. | SparePart | ArticleNumber |
|---------|------------------------------------|-----------------|
| 1 | Support | 03 08 02280 |
| 2 | Stop Angle, Foundation Depth 230mm | 02 08 02350 |
| | Stop Angle, Foundation Depth 280mm | 02 08 02355 |
| 3 | Washer A17 | 22 0125 16 1 |
| 4 | Hex Head Cap Screw M16x40 | 22 0933 16040 1 |

13.11 Supports 1185mm Complete



| ItemNo. | SparePart | ArticleNumber |
|---------|------------------------------------|-----------------|
| 1 | Support | 03 08 02300 |
| 2 | Stop Angle, Foundation Depth 230mm | 02 08 02350 |
| | Stop Angle, Foundation Depth 280mm | 02 08 02355 |
| 3 | Washer A17 | 22 0125 16 1 |
| 4 | Hex Head Cap Screw M16x40 | 22 0933 16040 1 |

